

# ROFO 910 PLUS

## *The facts.*

### Technical data

- Substrate web width:  
max. 910 mm / 35.8"  
min. 450 mm / 17.7"
- Substrate weight:  
max. 300 g/m<sup>2</sup>  
min. 40 g/m<sup>2</sup>
- Roll core diameter of the substrate: 152 mm / 6"
- Outer roll diameter of the substrate:  
Standard max. 1300 mm / 51.2"  
Optionally up to 1850 mm / 72.8"
- Continuous substrate web pull:  
max. 800 mm / 31.5"  
min. 50 mm / 2"
- Stamping area: max. 800 x 720 mm / 31.5" x 28.4"
- Speed: max. 130 m/min / 427'/min  
Up to 10'000 strokes/h
- Temperature up to 200 °C / 390 °F
- Pressure of the press: max. 150 tons / 165 US tons
- Foil webs: max. 10
- Foil core diameter: 3" and 1"
- Foil reel diameter: max. 400 mm / 15.8"
- Foil width:  
max. 810 mm / 31.9"  
min. 10 mm / 0.39"
- Weight and dimensions  
Weight: approx. 16.5 tons / 18.2 US tons  
Base: approx. 11.5 x 4.1 m / 37.7' x 13.5'  
Height: 3.6 m / 11.8'

### Standard equipment

- VACUFOIL foil transportation system
- 2 longitudinal foil feeds
- High capacity baling press for waste foils
- Touch Screen machine control

### Optional equipment

- Machine extensions
- Hologram equipment
- Up to 8 longitudinal and 2 transverse foil feeds
- Manufacturing Execution System

### Gietz Services around the globe

#### Quality guarantees

All Gietz-machines are provided with guarantees for functionality and material quality. They all have a long service life. The basis for this is the solid technology, which can be relied on at all times. This is proven by the fact that, as a result of the high production reliability and the performance of the machines, numerous customers have ordered further machines after their first one.

#### Gietz-Service – Security in every case

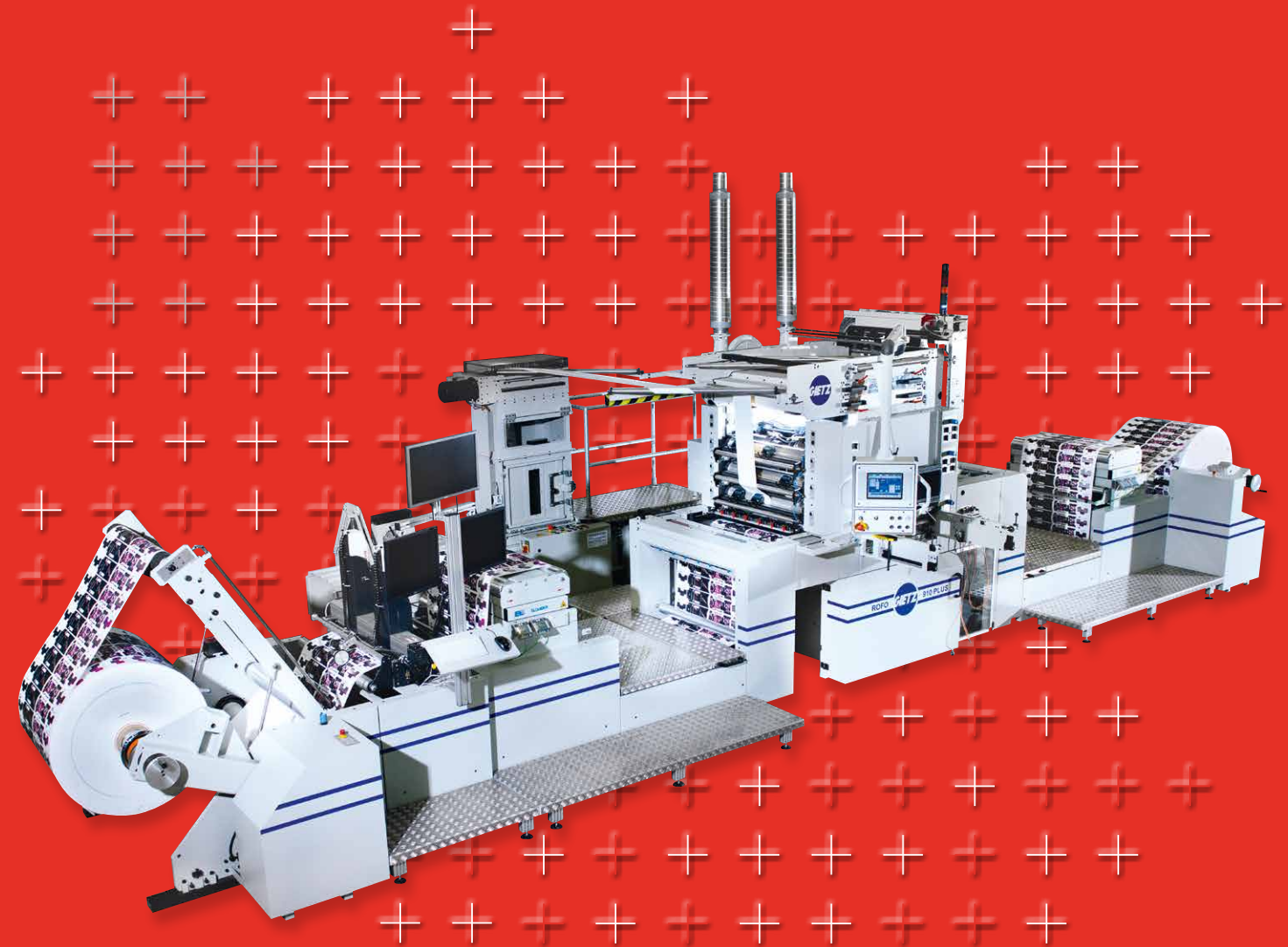
In order to guarantee the highest possible availability of the machine over decades, we would recommend the consideration of a service contract. The remote service analysis is a component part of this.

#### Global After-Sales Service

Gietz-machines require a minimum of regular servicing, as the experience of millions of operating hours has been integrated into every machine. For this servicing, you can rely on Gietz and its international partners at all times. This is also the case for the availability of customer service, the rapid arrival of service technicians and the prompt delivery of spare parts – all of which are a matter of pride for us. More than 30,000 different items are in stock. This applies for all Gietz-machines, even if they were purchased many years ago. Service work is only carried out by technicians who have been trained in our factory in Switzerland. You can thereby rely on their specialist capabilities at all times. Gietz and its partners are always there for you, both today and tomorrow.

# ROFO 910 PLUS

## *Flexible web processing.*



Gietz AG, Mooswiesstrasse 20, CH-9200 Gossau, Switzerland  
Phone +41 71 388 22 22, Fax +41 71 388 22 23, info@gietz.ch, www.gietz.ch

Member of the Arbeitskreis Prägefoliendruck e.V., Germany / FSEA Foil & Specialty Effects Association, USA /  
ECMA European Carton Makers Association, Holland / FFI Fachverband Faltschachtel-Industrie e.V., Germany /  
FINAT Fédération Internationale des fabricants et transformateurs d'Adhésifs et Thermocollants sur papiers et  
autres supports, Netherlands



02/2019/G



Gietz since 1892.  
From Professionals for Professionals.



# ROFO 910 PLUS

## *At a glance.*

Based on the flat-flat stamping principle, the ROFO 910 PLUS is used in the print finishing of printed and plain web substrates in the Food (chocolate, confectionery) and Non-food areas (tobacco, shopping bags), in addition to the print finishing of pre-printed webs in the packaging and decorative industries (gift wrap paper, wallpaper). The ROFO 910 PLUS processes paper, cardboard, plastic film and composite substrates, thereby demonstrating its flexible performance range. The ROFO 910 PLUS is also ideally suited to the Security industry. Here, registered and non-registered hologram patches and stripes are applied on to banknotes, official documents and in the field of trademark protection.

### The 10 Advantages

#### 1. 120 metres per minute!

The only web-fed foil stamping machine in the world capable of processing web widths up to 910 mm and offering the flat-flat foil stamping and embossing principle, runs at up to 120 m/min (corresponding to 10'000 strokes/hour).

#### 2. VACUFOIL

VACUFOIL, the high performance foil transportation system with the ability to process foil rolls with large diameter and longest foil pulls at highest machine speeds leading to excellent foil saving capabilities and huge net production output.

#### 3. Dwell time

With the flat-flat stamping principle, long dwell times under pressure can be achieved. This makes foil transfer with high gloss possible at low temperatures and is an advantage, for example, in the foil stamping and embossing of heat-sensitive and flexible substrates or coatings.

#### 4. Efficiency

The short set-up times for the cost effective flat stamping dies and the continuously pre-selectable repeat and print lengths, result in higher efficiency for both large and small print runs.

#### 5. Longitudinal and transverse foil feed

Foil feed systems running both in-line with, and across, the substrate running direction ensure a decisive reduction in foil consumption, and permit completely new foil usage calculations. Through the use of the transverse foil feed, a further working step can often be avoided, depending on the image layout of the web.

#### 6. Modular system

Tailor-made custom solutions are possible thanks to the modular construction. For example, two stamping stations can be arranged one after the other, and/or additional processing stages, including sheeting, piling, slitting and die-cutting, can be integrated.

#### 7. Hologram application technology

For the application of positioned holograms and stripes for the security industry, Gietz is long established as a well-proven supplier of industry leading technologies.

#### 8. Core competence and service life

For more than half a century, Gietz has focussed on foil stamping, and Gietz machines are first and foremost designed as foil stamping and embossing systems. User experiences with hundreds of machines have been consistently incorporated and integrated into their design. A Gietz is a Gietz: it foil stamps and embosses giving the highest quality, often for more than 20 years before requiring the first overhaul.

#### 9. Price-performance ratio

The very highest stamping quality, maximum production speed, extremely long service life and reliability. A Gietz machine is well worth its price.

#### 10. Top products for professionals

Foil stamping machines from Gietz are recognized by printers worldwide as industry leading products from professionals for professionals.

# ROFO 910 PLUS

## *Some details.*

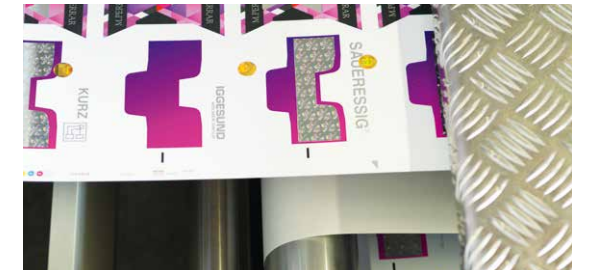
### VACUFOIL

- Longitudinal or transverse foil feeding
- Ergonomic foil reel mounting
- Suction channel frames with loop sensors to house the foil before advance
- Suction board at press entry for foil web tension control
- Pneumatic vacuum device at press exit with adjustable blowing nozzles for foil separation
- Air cushion shafts to support the foil transport
- Air induced draft fans with aspiration pipes to generate the vacuum



### Web substrate feeding

- A vertically designed web buffering system, before and after the press, allows the stamping process to start at full production speed
- The horizontal infeed and outfeed web buffering devices enables perfect synchronisation between the platen press and the continuous web unwind and rewind



### Machine extensions

- The standard machine can be extended by a second stamping station
- Another possibility is to add a web sheeter or different substrate unwind and rewind solutions
- Web substrate pullback device available; by selecting through the touch screen the web substrate pullback option, this allows reduction of setup waste to zero



### Baling press for used foils

- High capacity baling press for waste foil
- The foil waste drive is located outside the machine, offering a clean and time saving solution



### Hologram application

- The hologram foil is unwound using the VACUFOIL foil transportation system
- The foil tension of each hologram foil web can be adjusted individually
- Register mark detection takes place inside the press or at entry to the press
- Shredder system for waste foil is available

